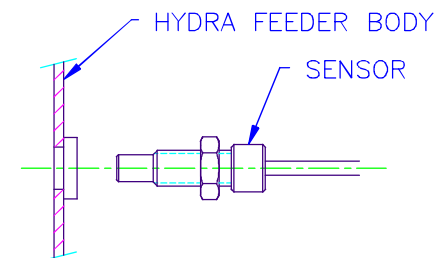
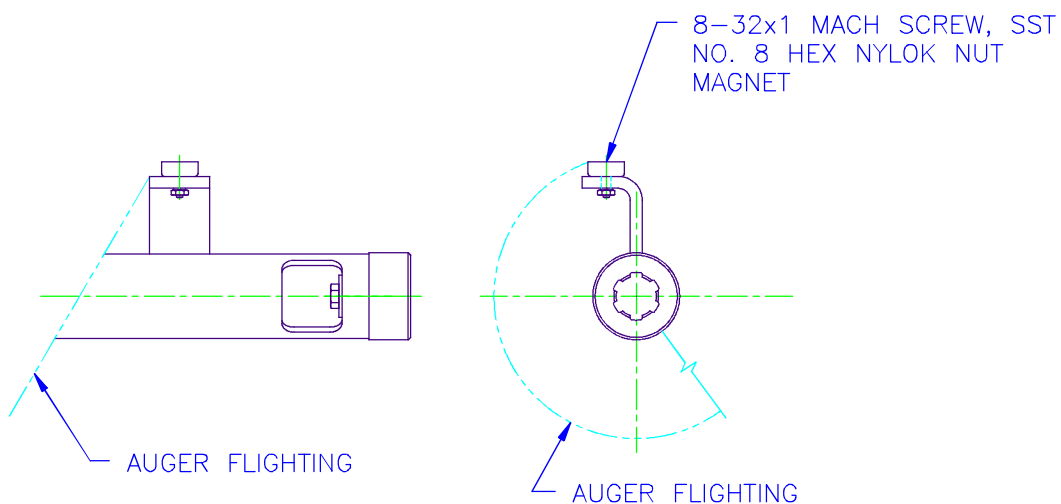
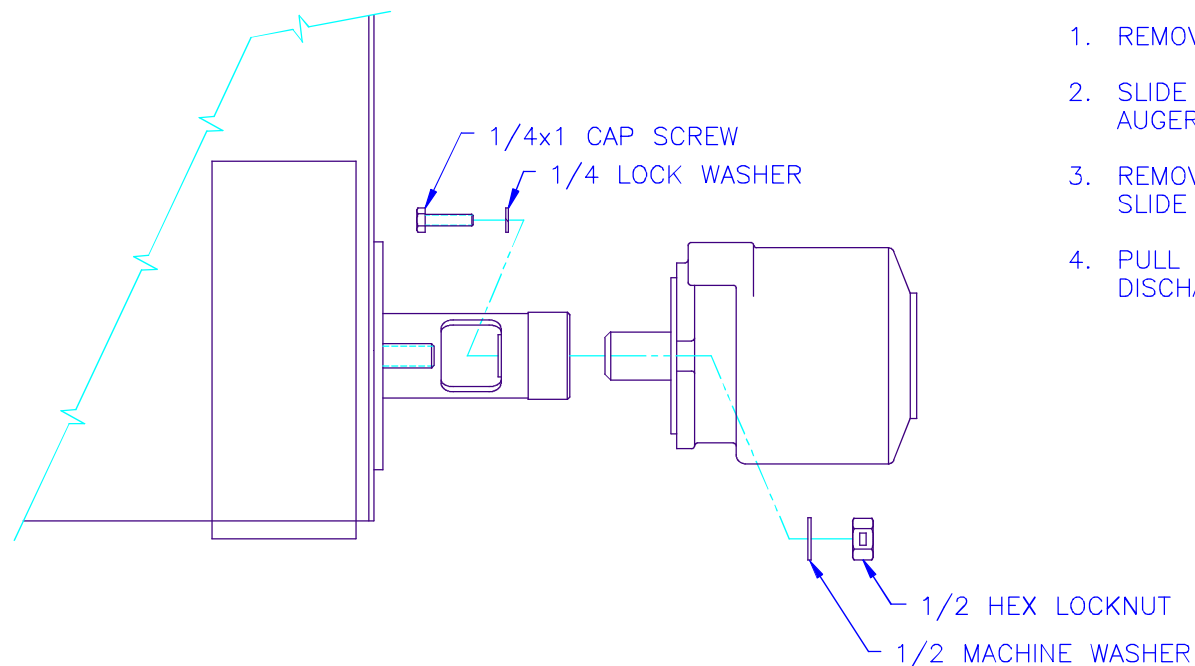


This drawing contains confidential proprietary information of Triple C, Inc. and is subject to return upon request. The furnishing of this drawing is not to be construed as the grant of any license, express or implied, to manufacture, have manufactured, use or sell the structures shown hereon.



POSITION END OF SENSOR APPROXIMATELY  
1/4" FROM MAGNET ON AUGER.  
TIGHTEN JAM NUT. DO NOT OVER TIGHTEN.

## AUGER REMOVAL INSTRUCTIONS



1. REMOVE 1/2" MOTOR MOUNT BOLTS.
2. SLIDE MOTOR AND AUGER OUT TO EXPOSE AUGER RETAINING SCREW.
3. REMOVE 1/4" AUGER RETAINING SCREW AND SLIDE MOTOR OFF OF AUGER.
4. PULL AUGER OUT OF HYDRA-FEEDER FROM DISCHARGE TUBE.

### TRIPLE C, INC.

P.O. BOX 248, SABETHA, KS 66534  
(785) 284-3674 FAX (785) 284-3931

DWG PATH: \DWG\HF

DO NOT SCALE DRAWING	SCALE: NTS	DRAWN BY: CEDRIC HEINIGER 08/31/95
----------------------------	---------------	--

TITLE:  
HYDRA-FEEDER  
AUGER REMOVAL INSTRUCTIONS

DRAWING NUMBER:  
HF12-20

REV  
C